



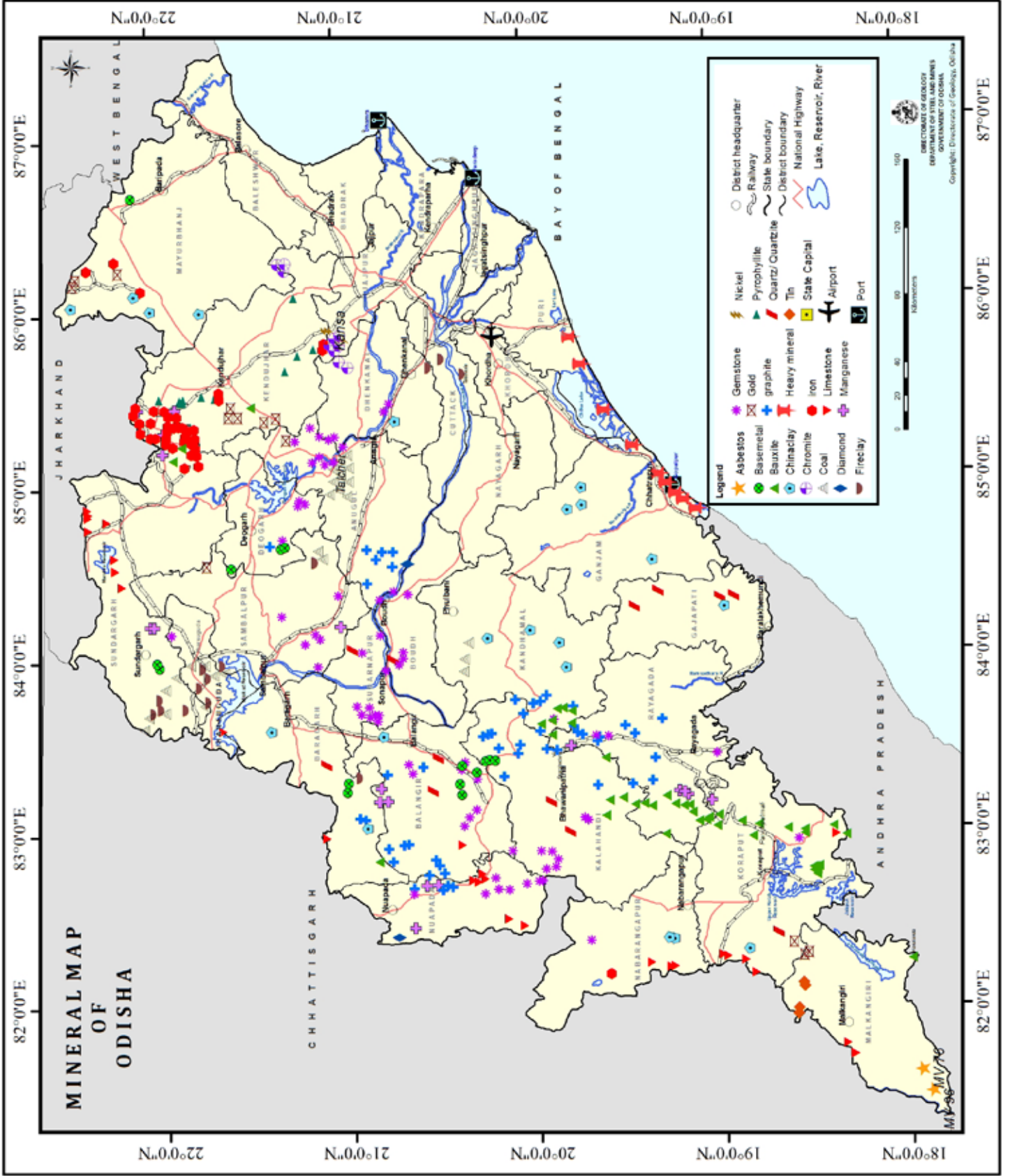
Govt. of Odisha



# Activities of **Steel & Mines** Department

**2020-21**







**GOVT. OF ODISHA**

**ACTIVITIES OF  
STEEL & MINES DEPARTMENT  
FOR THE YEAR 2020-21**



# TABLE OF CONTENTS

Sl. No.	Subject	Page
1	Background	01
2	Implementation of 5Ts	03
3	Directorate of Geology	05
	Iron & Manganese	07
	Limestone	08
	Graphite	08
	China Clay	08
	Dimension & Decorative Stone	09
	Quartz & Quartzite	09
	Soapstone	09
	Coal	09
4	Directorate of Mines	11
	Implementation of MMDR (Amendment) Act, 2015	13
	Auction of Mineral Blocks	13
	Collection of Mineral Revenue	14
	Production and Despatch of Ores & Minerals	14
	Enforcement Measures	14
	i3MS Project	14
	Chemical Analysis of Ores/Minerals	15
5	Odisha Mining Corporation Ltd.	17
	Sale of Different Minerals by OMC Ltd. for the Year 2020-21	19
	Statement Targeted production and sales for the Year 2020-21 & 2021-22	19
	Proposed Action of OMC Ltd. during 2021-22	20
	CSR & PD Activities of OMC during 2020-21	21
	New Initiatives for FY 2021-22	23
6	Odisha Mineral Exploration Corporation Ltd.	25
	Iron Exploration	27
	Bauxite Exploration	27
	Fire Clay and Soapstone Exploration	27
	Mining	27
7	Budget Provision and Exp. for the Financial Year 2020-21	33
	Programme Expenditure	35
	Administrative Expenditure	36



## BACKGROUND

Mineral resources in any economy plays a pivotal role in its development by extending assistance to the growth of Industrial Sector. Odisha has a lion share of the Country's mineral reserves. Abundant reserves of high grade Iron ore, Bauxite, Chromite, Manganese ore along with other minerals such as Coal, Limestone, Dolomite, PGM, Heavy minerals, Nickel, Vanadium, Graphite, Gemstone, Diamond, Dimension & Decorative stone etc. are extensively available in the State. Odisha accounts for country's resources of 96% Chromite, 92% Nickel, 51% Bauxite, 24% Coal and 33% Iron Ore and 43% Manganese. The estimated Mineral Resources of the State as on 01.04.2020 is furnished here under:

### MINERAL RESOURCES OF ODISHA AS ON 01.04.2020 (AS PER NMI 2015)

SL. NO.	NAME OF THE MINERAL	RESOURCE IN MILLION TONNES
1	Asbestos	0.0567
2	Basemetal	14.511
3	Bauxite	2122.5453
4	China clay	286.1514
5	Coal	80697.4971
6	Cobalt	31.000
7	Chromite	416.8078
8	Dunite	12.145
9	Fireclay	172.924
10	Graphite	20.0272
11	Iron ore	10010.036
12	Limestone	2204.8989
13	Dolomite	918.2822
14	Manganese	226.9552
15	Mineral Sand	366.3214
16	Nickel	174.63
17	PGM (in tonnes)	14
18	Pyrophyllite	13.6728
19	Quartz	74.9647
20	Quartzite	141.6718
21	Talc-Steatite-Soapstone	0.827
22	Tin ore	0.0155
23	Vanadium	4.8648
24	Pyroxenite	10.132

(Source: Director of Geology)

## PROMOTION OF STEEL PLANTS IN ODISHA

Odisha with country's one-third of total Iron Ore reserves stands as the largest Steel and Stainless Steel producer in the country. As such 35 Nos. of MoU signed Steel Plants and one Pellet Plant have commenced partial/full production. At present, the installed capacity of MoU based Steel Plants is 25.23 MTPA which is an increase of around 20% over the year 2013-14. Besides, 34 Nos. of Iron ore based Steel Industries have come up through Non-MoU route out of which 12 nos. with the installed capacity of 7.10 MTPA are already in production. Further, few Sponge Iron units have expanded their units for value added products which accounts for annual production capacity of around 0.49 MTPA. Sponge Iron units and Pellet Plants in the State have been established to a large extent utilizing the vast Iron Ore resources in the State for value added products which are significantly contributing to Domestic Steel Production in the country.

In order to make Iron Ore available to the end-user industries, Government have also implemented the pre-emption policy mandating the stand alone iron ore lessees to sell at least 50% of their production to the state based industries.

The aforesaid projects have been facilitated as part of the mineral development policy of the State Government with the aim of pursuing value addition, mass employment generation and welfare oriented revenue collection.

As of now, there are 47 Steel Plants with total installed capacity of around 33 MTPA are in operation which is one fourth of country's total installed capacity.

Also, State have taken initiative in metal sector for development of downstream units and ancillary units and accordingly Industrial promotion resolution has been suitably modified to attract more such industries in the State. Kalinganagar in Jajpur District is going to be a manufacturing hub in the State.

The National Steel Policy, 2017 envisages the increase in per capita steel consumption from the present level of 72 Kg to 158 Kg by 2030. The state is aiming to contribute 100 Million Tonne to National target.

### STATUS OF STEEL INDUSTRIES IN ODISHA (CAPACITY AND PRODUCTION)

(Figures in Million Tonnes)

COMPANY TYPE	MOU APPROVED CAPACITY	INSTALLED CAPACITY	ANNUAL PRODUCTION DURING 2019-20	PRODUCTION DURING 2020-21 (UP TO 3RD QUARTER)
Steel				
MoU	61.47	25.23	15.00	10.59
Non-MoU	39.97	7.10	04.46	02.85
SI units producing Steel	-	00.49	00.16	0.12
<b>Total Steel</b>	<b>101.44</b>	<b>32.82</b>	<b>19.61</b>	<b>13.56</b>
Sponge iron	-	*15.29	7.43	05.10
Pellet	-	29.80	22.34	17.14
<b>Grand total</b> (Iron Ore Based Industry)			<b>49.38</b>	<b>35.80</b>

(\*Estimated Quantity)

(Source: Steel Directorate, Govt. of Odisha)

A composite Directorate namely Steel Directorate has been created under the administrative control of Steel and Mines Department. The said Directorate has been functioning since July, 2016 to facilitate the investment promotions in Steel and Iron-based industries including value added downstream facilities in close co-ordination with IPICOL by assessing and addressing the problems faced by the Steel Industry and maintaining data base on production, capacity utilization, employment and investment etc.



MODERN INTEGRATED STEEL PLANT



## CONSTITUTION OF DISTRICT MINERAL FOUNDATIONS (DMF)

Odisha District Mineral Foundations Rules, 2015 have been framed and notified by the State vide Steel & Mines Department Notification No 7745/ SM dated 18.08.2015. Further, Amendment of Odisha District Mineral Foundations Rules, 2015 has also been issued incorporating the 'Pradhan Mantri Khanij Kalyan Yojana' (PMKKY) into the said DMF Rules and to include the amount of contribution to be made by the lessees of major minerals (in terms of second schedule to the MMDR Act, 1957) to the District Mineral Foundations as per orders of Ministry of Mines, Govt. of India. Provision for similar contribution to the DMF has also been incorporated in the OMMC Rules, 2016 as notified by the State Government. The constitution of District Mineral Foundation in all the districts of Odisha is complete. The object of the District Mineral Foundation is to work for the interest and benefit of persons and areas affected by mining related operations. So far Rs.11731.52 crores up to December, 2020 has been collected under DMF. To monitor the progress of functioning of DMFs in the State, a State Level Committee (S.L.C.) under the chairmanship of the Chief Secretary has been constituted vide this Department Notification No.5841/SM dated 14.07.2016. The subject of implementation of DMF Scheme (other than framing of Rules) has been assigned to Planning and Convergence Department vide letter No.10351/SM dtd.17.12.2016 of Steel and Mines Department.

## AUCTION OF MINERAL BLOCKS

25 Nos. of mineral blocks have been successfully auctioned during the year 2019-20 including 23 expired mining leases. Further, one more expired lease namely Badampahar Iron Ore Block has been successfully auctioned during June, 2020. Out of these, lease deeds have been executed for 19 blocks during 2020-21.

15 Nos. of Mineral blocks (14 virgin blocks and one expired lease) are in the pipeline to be taken up for auction very shortly. These include two blocks namely Unchhabali Iron & Manganese block & Kalimati Manganese block which are under process for auction with pre-embedded clearances.

## IMPLEMENTATION OF 5Ts

- **Up-gradation of i3MS:** Steel & Mines Department has implemented the IT based mineral administration through a software application named Integrated Mines and Mineral Management System i.e. i3MS to bring in more transparency in the mineral transactions in the state and to ensure proper monitoring & supervision of the same. This technology intervention caters to the "Ease of Doing" business in mining sector and helps monitoring various activities from extraction to consumption of the minerals at the end-use industries. The system also facilitates online vehicle tracking, issue of e-permit and regular surveillance. Steps are also being taken to adopt Drone Technology, web-casting methodologies for further improvising the system of i3MS.
- **Mineral Resources mapping:** The Department is to take up Comprehensive Mineral Resource Mapping of the State indicating the quantum of mineral resources, its valuation and development potential.
- **Upgrading the mineral exploration:** The Directorate of Geology and the OMECL are being substantially up-scaled and strengthened to increase the mineral exploration capacity in the state. Tie-ups will be made with the National and International Agencies. Use of IT in the mineral exploration is to be encouraged. OMECL has already initiated action to set up a World Class Core Sample Repository.
- **Capacity Building and Skill Up-gradation:** Capacity Building of the manpower resources in the Department and its PSU are being taken up. Global and National Level Training and Exposure are being arranged for technical officers to improve their skills. Action is also being taken to set up a Competent Legal teams in the Department to deal with the complex litigations.
- **Computerized Integrated Interface with customer/vendors by OMC Ltd.:** OMC is taking action to provide timely service through implementation of ERF/SAP.
- Under CSR Activities, comprehensive development of peripheral villages as best practice is to be taken up by OMC. Further, few selected villages are to be developed as smart villages akin to smart city concept.

## ODISHA RIGHT TO PUBLIC SERVICE ACT:-

Following 9 (Nine) public issues have been notified under the ORTPS Act. Out of which Sl. No. 1-8 services are coming under G2B and Sl. No. 9 is coming under G2C category.

1. Mineral Trade License
2. Issue of e-Permit (for Lessee)
3. Issue of e-Permit (for Trading)
4. Transport Vehicle Registration
5. Transporter Registration
6. Approval of Mining Plan for Minor Minerals other than Specified Minor Minerals.
7. Approval of Mining Plan for Specified Minor Minerals.
8. NOC for soil excavation / filling (renamed as Surface Right Grant Order)
9. Resolution of Grievances.

All the above services have been made under online platform.

## ODISHA MINERALS EXPLORATION POLICY

Steel & Mines Department vide their resolution dated 04.07.2015 have issued the Odisha Mineral Exploration Policy-2015 with the objective to make accurate assessment of the potentiality of mineral resources in the state through scientific exploration for optimal use of the bounties of natural resources. State Government has approved setting up of 'Odisha Mineral Exploration Corporation Limited (OMECL)' vide Steel & Mines Department resolution No. 7031 Dt.17.8.2016 and the said company has been incorporated on 25.10.2016 under the Company Act,2013 as 100% subsidiary of OMC Ltd. A State Level Empowered Committee (SLEC) has been constituted to recommend the state Government on various matters relating to OMECL. In the meantime, the entire equity of OMC in OMECL has been taken over by the State Government and now the said OMECL is a State PSU with the mandate to even go for mining besides being the Exploration Agency. In fact, process has already been initiated to allot mining blocks to OMECL.

## ODISHA MINOR MINERAL CONCESSION RULES, 2016

State Government has framed OMMC Rules, 2016 replacing the OMMC Rules, 2004 vide notification No.10221 dt.14.12.2016. After the amendment of the MMDR Act.1957 and declaration of 31 major minerals as minor minerals by Ministry of Mines, Govt. of India, these Rules have further been amended on dt.18.07.2017 & dt.21.05.2018 to bring in more clarity and facilitate more effective implementation.



## DISPOSAL OF QL/ML/PEL APPLICATION

In spite of COVID-19 situation, grant of Mining Lease & Prospecting License have been issued like other preceding years. During this period, Petroleum Exploration License (PEL) in respect of 5 blocks situated in Mahanadi basin has been issued and license for another block is under consideration. This is in fact the first experience to grant such license. In respect of Coal, mining lease grant order has been issued in respect of 1(one) coal block and terms & conditions for grant of mining lease has been issued for 2(two) coal blocks in Talcher coal field area.

For Beach Sand Minerals, exploration has been done in respect of one mine and proposal has been sent to the Central Government. Lease would be granted once the concurrence is received from the Ministry.

In respect of major minerals, lease period has been extended for 1(one) limestone mine.

In respect of minor minerals, lease period has been extended for 1(one) fire clay mine, 4(four) Decorative stone mines. Besides, Terms & Conditions have been issued in respect of 5(five) Decorative stone mines.



**DIRCTORATE  
OF GEOLOGY**



## DIRECTORATE OF GEOLOGY

Directorate of Geology, Odisha executes Mineral Investigation programmes to augment the mineral resources of the state to cater to the requirement of mineral based industries. With its headquarters at Bhubaneswar, it administers six Zonal Offices located at Balangir, Berhampur, Dhenkanal, Keonjhar, Koraput and Sambalpur. During the financial year 2020-21, the Directorate has undertaken 16 mineral investigation programmes (8(eight) at G-2 Level, 5(five) at G-3 Level and 3(three) at G-4 level) for minerals like Coal, Iron & Manganese Ore, Graphite, China clay, Soapstone, Limestone, Dimension/Decorative stone, Quartz/Quartzite & Artisan grade Decorative stone in the state for assessment of mineral resources at different level with a view to generate more number of auctionable blocks. In addition to field investigations, Gem Laboratory, Petrological Laboratory, Ore dressing Laboratory are also functional under the Directorate to achieve the investigation objectives. With the sustainable effort of the Directorate and S & M Department, one modern X-Ray laboratory has been set up in this Directorate which is unique in the state.

### ACHIEVEMENT OF THE DIRECTORATE OF GEOLOGY FOR 2020-21

SL. NO.	ITEM OF WORK	F.Y 2020-21
1.	No. of Geological Explorations	16
2.	Geological mapping(1:25,000)	176 Sq km
3	Geological mapping (1:10,000)	0.815 Sq km
4	Detailed geological mapping (1:5000/1:2000)	2.0075 Sq km
5	Trial excavation	75.6 Cu m
6	Drilling	3280.98 m [1126.48 m (In house) 2154.5 m (Outsourcing)]
7	Sampling- Rocks/mineral Coal sample	568 126.6m
8	Geophysical Survey (Magnetic Survey) (Self Potential)	0.25 sq km 0.3 sq Km
9	Investigation reports approved	17
10	Technical evaluation of Prospecting reports u/s 10 A (2)(B) & expiring leases	5
11	Approval of mining plans of minor minerals other than decorative stone	2088
12	Finalization of Geological reports of auctionable blocks	4
13	Identification of mineral blocks for up gradation	3 blocks
14	Gemstone Characterization No of stones Revenue generated in Rs.	185 Rs. 1,09,150/-
15	Petrographical Study Rock samples (Nos)	74

## IRON & MANGANESE:

- G-2 level of exploration for Manganese at Roida- D has been continuing since 2019-20 and so far 498.2m of core drilling in 15 boreholes has been achieved in which 55.55m (cumulative thickness) of manganese mineralization is encountered. Manganese (Pyrolusite & Psilomelane) occurs as irregular sporadic pockets with pinching & swelling effects intercalated with chert bands and laterite.

- G-4 level of investigation for iron ore around Thakurani Block of Keonjhar district has achieved geological mapping over an area of 0.815 sq km (1:10,000 scale).
- Out of two outsourcing drilling programmes, drilling in Mankarnacha Iron Ore Prospect will commence after obtaining forest clearance which is at the final stage.

## LIMESTONE:

- Exploration for crystalline limestone at G-2 level has been continuing since F.S 2018-19 around Telipadar of Balangir district and has achieved a drilling meterage of 1177 m in 40BHs. Cumulative thickness of 373.42m of limestone has been intercepted. The Project will be completed in this field season.



*Crystalline Limestone Core of Telipadar, Balangir District*

## GRAPHITE:

- G-2 level exploration for graphite around Khalpadar of Rayagada district is in progress from 2019-20. So far, a drilling meterage of 340.5 m has been achieved in 16 BH and

a cumulative thickness of 169.95m of graphite has been intercepted. Depth of BH varies from 16.50 to 29.85m. Apparent thickness of graphite varies from 1.60 to 25.60m.

- G-2 level exploration for graphite around Karabira, Dhenkanal district has achieved a drilling meterage of 2622.5m in 36 boreholes through out-sourcing. The cumulative thickness of graphite encountered is 420.7m. The project is delayed due to Covid-19 restrictions & drilling is in progress which will be completed by March 2021.
- G-3 level of investigation for graphite around Beheramunda of Balangir district through large scale mapping and scout drilling is in progress.
- G-4 level of investigation for graphite through geophysical prospecting around Bandhabhuin of Dhenkanal district is in progress. So far, self-potential survey over an area of 0.3sq km has been carried out.



*Graphite bearing core around Khalpadar Block, Rayagada District*

## CHINA CLAY:

- G-2 stage of exploration for china clay around Dumuria of Mayurbhanj district has been continuing since F.S 2018-19 and so far drilling meterage of 1635.2 m in 78 boreholes has been achieved and cumulative thickness of 1301.69 m of china clay horizons of different hues are intercepted. Drilling is in progress and the project will be completed during F.S 2020-21.



*Chinaclay core, Dumuria, Mayurbhanj District*

## DIMENSION & DECORATIVE STONE:

- G-4 stage of investigation for dimension/decorative stone around Paburia of Kandhamal district is completed and an area of 70 sq km has been geologically scanned on 1:25,000 scale and no potential block has been located.
- G-3 stage of investigation for dimension/decorative stone around Garabandha of Gajapati district is continuing and an area of 76 sq km has been covered by geological mapping on 1:25000 scale and an area of 0.19 sq km has been covered on 1:4000 scale. One potential Decorative and Dimension Stone block has been identified over an area of 300 m X 270 m at 300m SW of Lingipur village.

## QUARTZ & QUARTZITE:

- G-3 stage of investigation for Quartz & Quartzite around Burbuda of Subarnapur district located two potential quartz cores of eroded Pegmatites having an aerial spread of 150 m x 100m & 180 m x 70 m around Hatilmunda village.

## SOAPSTONE:

- Investigation for soapstone at G-3 stage around Bhaludungrī of Sundargarh district is in progress. An area of 30 sq km has been geologically mapped on 1:25000 scale.

## COAL:

- G-2 level of exploration for coal in dip side of block –IV, IB valley in Jharsuguda district is continuing. Drilling meterage of 527m has been achieved from 2 BHs and 101.29 m of coal has been intercepted so far during current E.S.
- G-2 level of exploration for coal in Madhupur block of Ib valley coal field is completed with achievement of 2360.70m drilling in 5 BHs in which cumulative thickness of coal encountered is 380.99m. The Lajkura seam is found to be the major coal seam having a viable economic potential in the block. This seam has splitted into three sections and the thickness varies from 3.39m to 34.38m. Processing of the Geological Report is in progress.



*Crawler Mounted Rig deployed in IB valley Coal Field*

## OTHER IMPORTANT ACTIVITIES:

- The Gem testing laboratory of the Directorate characterized and certified 185 Nos. coloured, precious, semiprecious and organic stones on payment basis and generated revenue of Rs. 1,09,150/-
- The Petrological laboratory characterized 74 rock specimens collected from different investigations.

- The Technical Committee evaluated 3 Geological Reports of Mining Leases which will be auctioned.
- Geological Reports of 3 Decorative/Dimension Stone blocks around Jhadapada, Lausahi & Nuagaon of Gajapati district with an estimated resource of 2.972 million cubic meter of G3 stage have been provided to DM (O) for auction purpose.
- A resource of 24498.2 tonnes of Quartz has been estimated around Bhatuabeda – Chirgidihi of Mayurbhanj District & the Geological report is submitted to Directorate of Mines, Odisha for auction.
- 3 mineral blocks are identified for up gradation of resource in coming years.
- 2088 mining plans of minor minerals (Sairat sources) other than decorative stones have been approved.
- Highly sophisticated XRD & XRF have been installed in Directorate of Geology for identification of ores and minerals.

## TENTATIVE EXPLORATION PROGRAMME FOR 2021-22

- Exploration for coal in Dip side of Block –IV of Ib Valley Coalfield, Jharsuguda district. ( G-2 stage)
- Exploration for Iron ore around Mankarnacha Block, Keonjhar & Sundargarh districts. (G-2 stage) (Out sourcing)
- Exploration for Graphite around Khalpadar block, Rayagada district. (G-2 stage)
- Exploration for Limestone around Kantabanji of Balangir district. (G-2 stage)
- Exploration for Iron ore around Thakurani block, Keonjhar district. (G-3 stage)
- Exploration of Graphite around Bandhabhuin, Dhenkanal district. (G-3 stage)
- Investigation for Quartz / Quartzite around Kalimela Tahasil, Malkanagiri district. ( G-3 stage)
- Investigation for Graphite around Kutragarh, Rayagada district. ( G-3 stage)
- Investigation for rocks suitable for Decorative and Dimension stone in parts of Gajapati district. (G-3 stage)
- Geophysical Survey for Base metal around Bhikabahali, Balangir district. ( G-4 stage)
- Geophysical Survey for Graphite around Badakantakul, Dhenkanal district. ( G-4 stage)
- Investigation for Pyrophyllite& Quartz around Bhaliadihi, Keonjhar district. ( G-4 stage)
- Investigation for Graphite around Huruguda, Koraput district. ( G-4 stage)
- Investigation for Limestone and Dolomite around Bimta, Sundargarh district. ( G-4 stage)
- Mineral Potential Survey around Gurundia, Sundargarh district. ( G-4 stage)
- Investigation for Quartz and Quartzite in Jharsuguda District. ( G-3 stage)
- Investigation for Iolite around Bandoguda in Kalahandi District (G-3 stage)





**DIRECTORATE  
OF MINES**



**3D LASER SCANNER SURVEY AT MINES**



**DRONE SURVEY AT MINES**

The Directorate of Mines administers the MMDR Act and regulates mining activity of the State for proper utilization of its abundant mineral resources and collection of mining revenue for the State exchequer. Its main functions include administration of mineral concessions for mining and quarrying operation in accordance with the provisions of MMDR Act, 1957 and the Rules framed thereunder particularly the Mineral (Other than Atomic and Hydro Carbons Energy Minerals) Concession Rules, 2016, Odisha Minor Mineral Concession Rules, 2016 and Odisha Minerals (Prevention of Theft, Smuggling & Illegal Mining and Regulation of Possession, Storage, Trading & Transportation) Rues, 2007. In addition to collection of mineral revenue, control and prevention of illegal mining operations, regulation of transportation and utilisation of minerals by end-using industries, application of Information Technology in various operations in co-ordination with other agencies of the State and Central Government are also some of the major responsibilities of this Directorate.

## IMPLEMENTATION OF MMDR (AMENDMENT) ACT, 2015.

In pursuance to the provision of Section 8A(3) & 8A(6) of MMDR (Amendment) Act, 2015, the State Government has extended the period of mining leases in respect of 118 leases so far. The break-up of the said mining leases are as follows:

Graphite	1
Bauxite	2
Chromite	11
Chromite & Pyroxenite	1
Dolomite	2
Iron & Manganese	25
Iron Ore	40
Limestone	3
Limestone & Dolomite	7
Manganese Ore	13
Sand (Stowing)	3
Iron and Bauxite	2
China clay	1
Pyrophyte and Quartzite	2
Iron & Dolomite	1
Manganese & Bauxite	2
Mineral Sand	1
Quartz	1
<b>Total</b>	<b>118</b>

Out of the total 118 extended leases, 87 nos of lease deeds for extended period have been executed so far. Efforts are being taken for execution of the remaining leases. In addition, in pursuance of the provisions of section 10A(2)(c) of the MMDR (Amendment) Act-2015, the State Government has granted 18 mining leases out of which the following 16 mining leases have been executed and registered for different major minerals in the state as on 31.01.2021.

MINERALS	AS PER SECTION 10(A) 2 (C) OF MMDR ACT
Iron Ore	5 (3 in Keonjhar Dist. 2 in Sundargarh Dist.)
Iron & Manganese Ore	1 (in Sundargarh Dist.)
Bauxite	1 (in Koraput & Rayagada Dist.)
Graphite	1 (in Rayagada Dist.)
Tin Ore	1 (in Malkangiri Dist.)
Gemstone	5 (2 in Rayagada Dist & 3 in Kalahandi Dist.)
Quartz & Gemstone	2 (in Subarnapur Dist.)
<b>Total</b>	<b>16</b>

## AUCTION OF MINERAL BLOCKS

25 Nos. of mineral blocks have been successfully auctioned during the year 2019-20 including 23 expired mining leases. Further, one more expired lease namely Badampahar Iron Ore Block has been successfully auctioned during June, 2020. Out of these, lease deeds have been executed for 19 blocks during 2020-21.

15 Nos. of Mineral blocks (14 virgin blocks and one expired lease) are in the pipeline to be taken up for auction very shortly. These include two blocks namely Unchhabali Iron & Manganese block & Kalimati Manganese block, which are under process for auction with Pre-embedded clearances.

## COLLECTION OF MINERAL REVENUE:

The mineral sector earned revenue to the tune of Rs. 9894.51 Crore during 2020-21 (Up to January, 2021). Collection of revenue for last five years is furnished below.

YEAR	TARGET (RUPEES IN CRORE)	MINING REVENUE COLLECTED (RUPEES IN CRORE)
2016-17	7000	4925.66
2017-18	6630	6130.97
2018-19	7100	10479.18
2019-20	9000	11020.02
2020-21 (up to Jan 2021)	-	9894.51

## PRODUCTION AND DESPATCH OF ORES / MINERALS :

During the year 2020-21 (up to 31st Jan, 2021) provisionally 267.636 Million Tonne of minerals has been despatched against the production of 227.95 Million Tonne. Production and despatch of all the ores / minerals in the State during last five years are furnished below.

YEAR	PRODUCTION (MILLION TONNE)	DESPATCH (MILLION TONNE)
2016-17	264.84	285.25
2017-18	270.84	287.673
2018-19	295.45	310.08
2019-20	311.453	320.087
2020-21 (up to Jan-2021)	227.95	267.636

## ENFORCEMENT MEASURES:

For effective control of illegal mining and illegal transaction of ore / minerals, stringent steps are being taken for enforcement of the Odisha Minerals (Prevention of Theft, Smuggling & Illegal Mining and Regulation of Possession, Storage, Trading & Transportation) Rules, 2007 so as to prevent leakage of mining revenue. During the financial year 2020-21 (up to Jan, 2021), 55 cases of illegal extraction, storage, transportation of various ores / minerals leading to seizure of 11,084.06 MT of ores / minerals and Rs. 44.00 Lakh has been realized on account of compounding fee/penalty by District Level Enforcement Squad. Further, to stop illegal mining, necessary action is being taken for inspection of the licensee by the State Level Enforcement Squad and District Level Task Force at regular intervals and appropriate legal actions are being initiated against the erring licensees on detection of violation of license conditions. The State Level Enforcement Squad has conducted raids in 28 cases and seized 1 (one) vehicle and have also collected Rs.9.50 Lakh during the year 2020-21 (up to Jan, 2021) as penalty. These steps are being taken regularly to curb illegal transportation of minerals.

## INTEGRATED MINES & MINERALS MANAGEMENT SYSTEM (i3MS) PROJECT:

Integrated Mines & Mineral Management System (i3MS) is the pioneering Information & Communication Technology (ICT) Project of the Steel & Mines Deptt., Govt. of Odisha. During the last 10 years, i3MS has been one of the primary drivers for "Ease of doing Business" and a classic example of good governance under the 5T principles adopted by the Govt. of Odisha.

The system has effectively led to enhanced mining revenue collection, quick and efficient disbursement of services and improved system for monitoring mining based activities.

## MAJOR IMPACTS OF THE SYSTEM ARE:-

- More than 91,777 user registrations in i3MS.
- Rs. 59,245.81 Crore worth of mining revenue collection through the system till date since inception.
- Around 325.06 Crores of User fees and 11.66 Crores of Application fees collection till date since inception.
- More than 903,652 e-Permits and 74,173,532 e-Passes issuance till date since inception.
- 964 nos. electronic Weigh bridges integrated with i3MS for online mineral weighments till date since inception.

## KEY ACHIEVEMENTS DURING THE YEAR SO FAR ARE:-

- Helpdesk, Grievance and Feedback System is completed.
- Post Auction Mineral Concession System Automation for Mining Lease (Major Mineral & Specified Minor Mineral), Composite License, NERP under Business Reform Action Plan (BRAP) is completed.
- Automation of NOC for Soil Excavation (Surface Rights) under BRAP is completed.
- Online approval of Mining Plan for minor mineral and specified minor mineral is completed.
- Integration of i3MS with FOIS system of Indian Railways for coal transportation is completed.
- Integration of i3MS with Central Monitoring System (CMS) of G.A, Department is completed.
- PoC for Drone Technology for mine pit, stock volume estimate and lease boundary verification is completed.

## ACTIVITIES IN PIPELINE ARE:-

- Pilot implementation of Drone Technology in all the working leases of Joda mining circle are to be extended to other mining circles.
- Establishment of Unmanned Weighbridge (Automatic Weighbridge) Solution for Govt. Check gates.
- Integration with FASTAG Solution for mineral transportation.
- Integration with SPCB, MoEF& CC and IBM for data validation of statutory clearances
- Establishment of Integrated Command Control Centre and CCTV Surveillance system
- Integration with PAN & GST

## CHEMICAL ANALYSIS OF ORES / MINERALS :

During 2020-21 (up to Jan, 2021) chemical analysis of 24,476 ores / minerals samples consisting of 33,665 constituents were undertaken by the analytical laboratories of the Directorate of Mines. An amount of Rs. 158.43 Lakh has been collected towards analysis charges of commercial samples. A summary of performance of the Chemical Analysis Wing of this Directorate on analysis of samples of ores / minerals during last five years is furnished below.

### ANALYSIS OF SAMPLES WITH COLLECTION OF ANALYSIS CHARGES DURING LAST 5 YEARS.

YEAR	NO. OF SAMPLES ANALYSED	NO. OF CONSTITUENTS DETERMINED	AMOUNT OF ANALYSIS CHARGES COLLECTION (IN LAKH RUPEES)
2016-17	24208	39936	132.96
2017-18	23641	39783	137.08
2018-19	21799	41344	117.80
2019-20	27038	50218	132.03
2020-21 (Up to 31st Jan,2021)	24476	33665	158.43



**STOCKYARD POSITION IN UNCHABALI IRON ORE MINES USING DRONE SURVEY**



**ODISHA MINING  
CORPORATION LTD.**





OMC HOUSE  
ओम्स हाउस

OMC HOUSE



## PRODUCTION

### BUDGETED PRODUCTION TARGET VIS-A-VIS ACHIEVEMENT OF DIFFERENT MINERALS

(Fig. in MT)

SL.NO.	NAME OF THE MINERALS	BUDGETED TARGET 2020-21	ACHIEVEMENT TILL 31.01.2021
1.	IRON ORE	1,30,04,000	1,01,62,951.48
2.	CHROME ORE	7,76,914	7,76,914
3.	BAUXITE ORE	30,00,000	19,20,000
	TOTAL =	1,71,49,000	1,28,59,865.48

## SALES

### SALE OF DIFFERENT MINERALS BY OMC LTD. FOR THE YEAR 2020-21 (UP TO JAN,2021) AND TARGET FOR THE YEAR 2020-21

(A)

(Fig. in MT)

SL.NO.	NAME OF MINERALS	ANNUAL TARGET	ACHIEVEMENT (UP TO JAN,2021)
1.	IRON ORE	1,45,54,000	1,03,15,762
2.	CHROME ORE	15,15,218	6,07,426
3.	BAUXITE	30,00,000	23,14,026
	TOTAL	1,90,69,218	1,33,33,175

(B) The Odisha Mining Corporation Ltd. has signed Sales Agreement with 59 nos. of domestic buyers for supply of 1,08,23,330 MT of Iron Ore, 12 nos. of domestic buyers for supply of 9,82,310 MT of Chrome Ore and with 1(one) no. of domestic buyer for supply of 21,00,000 MT of Bauxite per year under Long Term Linkage (LTL) basis.

OMC Ltd. sells Iron Ore, Chrome Ore and Bauxite to both inside and outside companies/buyers through National e-Auction.

## FINANCE

### STATEMENT OF TARGETED PRODUCTION & SALES FOR THE YEAR 2020-21 AND 2021-22

Qty in Lakhs MT

ORE	MINE	UOM	REVISED ESTIMATE 2020-21		BUDGET ESTIMATE 2021-22	
			PRODUCTION	SALES	PRODUCTION	SALES
Iron Ore	Daitari	MT	30.000	36.000	30.000	30.000
	Gandhamardhan (A)	MT	2.250	2.870	3.50	3.50
	Gandhamardhan (B)	MT	65.02	70.12	80.98	90.00
	Kurmitar	MT	30.000	31.020	60.00	60.00
	Tiring Pahar	MT	0.82	0.82	3.28	3.28
	Mahaparbat	MT	-	-	9.75	9.75
	Khandabandh	MT	-	-	5.00	5.00
	Banspani	MT	-	-	9.89	9.89
	JillingLangolota	MT	1.19	0.59	59.87	59.87
	Guali	MT	0.98	0.49	49.69	49.69
	Total:-		130.26	141.91	311.96	320.98

ORE	MINE	UOM	REVISED ESTIMATE 2020-21		BUDGET ESTIMATE 2021-22	
			PRODUCTION	SALES	PRODUCTION	SALES
Chrome Ore	South Kaliapani	MT	13.00	9.00	10.00	12.000
	Sukrangi	MT	1.300	2.00	3.00	3.99
	Bangur	MT	-	0.01	0.15	0.15
	<b>Total:-</b>		<b>14.30</b>	<b>11.01</b>	<b>13.15</b>	<b>16.14</b>
Bauxite	Kodingamali	MT	30.00	32.00	30.00	32.00
	<b>Total:-</b>		<b>30.00</b>	<b>32.00</b>	<b>30.00</b>	<b>32.000</b>
<b>Total (IRON, CHROME, BAUXITE)</b>			<b>174.56</b>	<b>184.92</b>	<b>355.11</b>	<b>369.12</b>
Khondalite	Kundakundi	Cum	0.11	0.11	0.25	0.25
	Kunda					
	<b>Total:-</b>		<b>0.11</b>	<b>0.11</b>	<b>0.25</b>	<b>0.25</b>

## FOREST & ENVIRONMENT

### INFORMATION ON ACTIVITIES REPORT OF F&E CELL, OMC FOR THE F.Y 2020-21 (UPTO 31.01.2021)

Forest Clearance from MoEF& CC, Govt. of India for Forest Diversion Proposals

- Stage – I Forest Clearance (FC) obtained in respect of Banspani iron ore mines over 380.40 ha.
- Stage – II Forest Clearance (FC) obtained in respect of Infrastructure for Kurmitar & Rantha mines over 11.912 ha.
- Filing of Forest Diversion Proposals pertaining to Kurmitar Conveyor Corridor over 86.479 ha. Gandhamardan Road over 7.518 ha.
- Recommendation of Forest Diversion Proposal for grant of Stage-I FC to MoEF& CC, Govt. of India pertaining to Kurmitar conveyor corridor over 86.479 ha.
- Processing of Forest Diversion Proposals at various levels in the State Government pertaining to Dubna-Sukradihi Iron & Manganese Ore Mines.
- Processing of exploration proposal of BPJ Iron Ore Mines at various level at State Govt.
- EC obtained from MoEF& CC, Govt. of India for Kurmitar Mines, Mahaparbat (Unchabali) Mines and Sukurangi Mines for EC expansion proposal.
- EC obtained from SEIAA, Bhubaneswar pertaining to Narangarh Decorative stone (Khondalite) Mines.

### PROPOSED ACTION OF OMC LTD DURING 2021-22

- To obtain EC pertaining to expansion proposal of Daitari Mines, Kodingamali Mines and fresh proposal pertaining to Dubna-Sukradihi Mines of OMC from MoEF&CC, Govt. of India.
- To obtain Stage-II Forest Clearance of Daitari Conveyor Corridor over 106.016 ha., Gandhamardan Block-A Iron Ore Mines over 76.7206 ha. and over 401.7824 ha., Unchabali Iron Ore Mines over 68.00 ha., Khandbandh Iron Ore Mines over 345.189 ha., Banspani Iron Ore Mines over 183.218 ha., Sukurangi Chromite Mines over 162.242 ha., Daitari Iron Ore Mines over 746.3325 ha., Dubna-Sekradihi Iron & Manganese Ore Mines over 1243.27 ha., Rantha Iron Ore Mines over 268.8731 ha. and South Kaliapani overburden dump site over 168.948 ha.

- To file forest diversion proposal & obtain Stage-I Forest Clearance in respect of Koira-Kasira & Koira-Bhanjapali, Guali Iron Ore Mines and Jilling Iron & Manganese Ore Mines.
- To obtain Stage-I Forest approval for exploration proposals such as Kathpal, Dalki, Parulipada, KolhaRaida, Raida-78, Chrome Block-I, Chrome Block-II, Umpavally, Nishikhal, Baniapank, BPJ, Serenda-Bhadrasahi Mines.

## GEOLOGY

### IMPORTANT ACTIVITIES OF GEOLOGY SECTION DURING THE FINANCIAL YEAR 2020-21 (UPTO 31.01.2021)

#### A. EXPLORATION:-

During the financial year 2020-21, the following quantum of exploration work has been undertaken in different lease-hold areas of OMC for assessment of additional resources, mine planning and delineation of barren areas:

SL. NO.	ITEM OF WORK	ANNUAL TARGET FINANCIAL YEAR 2020-21	ACHIEVEMENT FINANCIAL YEAR 2020-21 (APRIL, 2020 TO JAN., 2021)
1.	Geological Mapping	1410 H	565 H
2.	Core Drilling	60,425 M	54,162 M
3.	Sampling & Analysis	24,845 nos.	12,675 nos.

#### B. MINERAL CONCESSION:-

1. During 2020-21, 3 nos. of revised PL blocks of Chromite in Sukinda Valley are executed.
2. Two new MLs i.e. Jilling-Longlotta ML and Guali Iron ML are executed.

## CORPORATE SOCIAL RESPONSIBILITY

### BRIEF NOTE ON CSR & P.D ACTIVITIES OF OMC LIMITED FOR THE FY. 2020-21

During the year 2020-21 OMC Limited has spent Rs.156.31 Crores under the Head of CSR and periphery development (from 1st April, 2020 to 31st January, 2021) to fulfil its CSR & PD obligations on activities like providing healthcare facilities, improving quality education and promotion of talents, development of Sports, Environment protection and energy conservation, clean water and sanitation, skill development and training, livelihood promotion and infrastructure development, disaster management, eradication of hunger and other community developments in and around the periphery villages.

The major activities carried out for FY 2020-21 from 1st April, 2020 till 31st January, 2021 are as follows:

#### ASSISTANCE FOR COVID-19:-

- a. OMC supported Rs.250.00 Crores under Donation to Chief Minister Relief Fund (CMRF) for effective management of COVID-19 emergency situation in the State.
- b. Due to outbreak of COVID-19 situation, OMC has been supporting 10 hospitals in 8 districts (Puri, Dhenkanal, Kalahandi, Kandhamal, Bolangir, Mayurbhanj, Cuttack & Khurda) for 1075 General Beds, 66 HDU Beds, 109 ICU Beds. The Projected cost is Rs.231.87 Crores out of which already Rs.79.86 Crores have been spent.



- c. Substantial assistance was provided for distribution of Food grains and other basic necessities which were distributed amongst the nearby periphery villages of OMC Mines.



**A. Promotion of Quality Education:**

- OMC has been committed for construction of 25 model schools (Adarsh Vidyalayas) over a period of three years with financial implication of Rs. 100.00 Crore. So far 16 nos of schools have been completed and rest would be completed by March, 2021.
- **OMC Super Programme-** Out of the 74 students who were enrolled across the State for this programme for residential coaching for IIT and other premier Engineering Institutes' Entrance Examination through Centre for Social Responsibility (CSR) and Leadership (CSRL, New Delhi) at Bhubaneswar, had successfully cleared into various IITs and other premier Engineering Institutes of National Repute.
- Support of Rs. 11.60 Crores was extended for Sraddha Sanjeevani Children Home situated at Ganjam towards rehabilitation of HIV infected children and other orphaned children.
- Supported funds towards construction of 30 nos of schools in Jajpur district with total cost of Rs. 4.61 Crore, out of which Rs. 3.22 Crore have already been spent.
- Supported Rs. 61.00 Lakh for construction of separate building for girls at Adruta Children Home, Angul by RAWA Academy.
- Support of Rs. 4.81 Lakh was provided to Stewart School for managing and functioning of the school

## ENVIRONMENT CONSERVATION & ECOLOGICAL SUSTAINABILITY:

- a. For F.Y. 2019-20, an amount of Rs. 20.00 Crore has been supported to OSDMA for large scale plantation in the cyclone "FANI" affected areas of State.
- b. MoU has been signed with Forest & Environment Department, Government of Odisha for plantation of 1 million saplings i.e. @ 1 tree per 10 metric tons of ore extracted as part of our green initiative. Rs. 29.50 Crore has been spent over four years from 2015-2021 and 50.53 lakh trees have been planted covering 2640 ha. through Forest Department, PCCF office. For the current financial year Rs. 6.45 Crore has been released to PCCF, Bhubaneswar. The plantation programme carried out by the forest division of Keonjhar, Keonjhar-WL, Cuttack, Dhenkanal, Koraput, Rayagada, Sundargarh, Jharsuguda, Kalahandi-S, Kalahandi-N, Jayapur and Bonai.
- c. Financial Assistance of Rs. 198.95 Crore has been sanctioned for repairing and renovation of the Eco-Tourism complexes at Chilika, Chandaka & Puri Wildlife Division out of which Rs. 181.05 lakh has been spent.

## RESTORATION OF HISTORICAL BUILDINGS/ARCHITECTURE:

- a. Support of Rs. 8.50 Crore provided for restoration and renovation of Baladev Jew Architectural Heritage at District Kendrapara.

## COMPREHENSIVE DEVELOPMENT VILLAGE INITIATIVE:

- a. As per the Action Plan for 5Ts, OMC has identified two of its mines – Gandhamardan and Kodingamali to take up Comprehensive Development of peripheral villages as a best practice. In these identified villages, comprehensive development of the whole villages will be done.

## HEALTH CARE FACILITIES:

- a. Support of Rs. 7.64 Crore towards 16 nos of ALS ambulances (Advanced Life Support Ambulances) which will be deployed across various districts alongwith support of Rs. 75.76 lakh for maintenance costs of one year.
- b. 24\*7 Help Desk and Information Centre has been set up with SAHAYA each at the Capital Hospital, Bhubaneswar, District Hospital Puri and SCB Medical College & Hospital, Cuttack for F.Y. 2020-21. To support and assist the needy, poor, homeless, destitute patients and accident victims, total financial costs of Rs. 55.63 lakh will be there.
- c. Partnered with LV PRASAD EYE INSTITUTE for Setting up “Vision plus Eye Centre at Barbil” for Rs. 77.00 lakh and “Advanced Eye care on Wheels” amounting to Rs. 116.00 lakh to provide comprehensive eye healthcare services in the mining regions across the State.
- d. **Mobile Health Camps:** Various monthly health camps are being organized in around our peripheral villages of Mines to improve the access and availability of quality healthcare thereby strengthening the rural public healthcare systems.
- e. **Specialized Health Camps:** Patients are being provided with free treatments and medicines as per the diagnosis.
- f. Extended Support for construction of MAA Gruha and other basic amenities at CHC Laxmipur, District Koraput with total cost of Rs. 257.73 lakh.



## IMPROVEMENT IN INFRASTRUCTURAL FACILITIES AT TRIBAL AREAS / MINING AREAS / ASPIRATIONAL DISTRICTS:

Construction of rural and semi urban area infrastructures like Roads, Bridges, Culverts, Pucca houses, Toilets, Mahilasamiti Buildings, Drains, Bus stops, Rural electrification, Creation of water bodies, Community centers, Youth clubs etc for periphery villages of Keonjhar District & Jajpur District.

## SANITATION & HYGIENE SCHEMES:

CLTS (Community Led Total Sanitation) Programme was launched for 15 villages (4107 households) covering remote villages of Sukrangi Chromite Mines. During July, 2019, these 15 villages were declared as “ODF” Status. For F.Y. 2019-20, the project has been replicated in 3 (three) other Mining Regions-Daitari, Gandhamardan & Kurmitar covering 22 villages with total cost of Rs. 37.01 lakh.

## PROVISION OF SAFE DRINKING WATER FACILITIES:

Extended Support for Installation of Solar pump based pipe water supply system at Panchagochhia village of Morada for 128 households with sanction of Rs. 91.92 lakh.

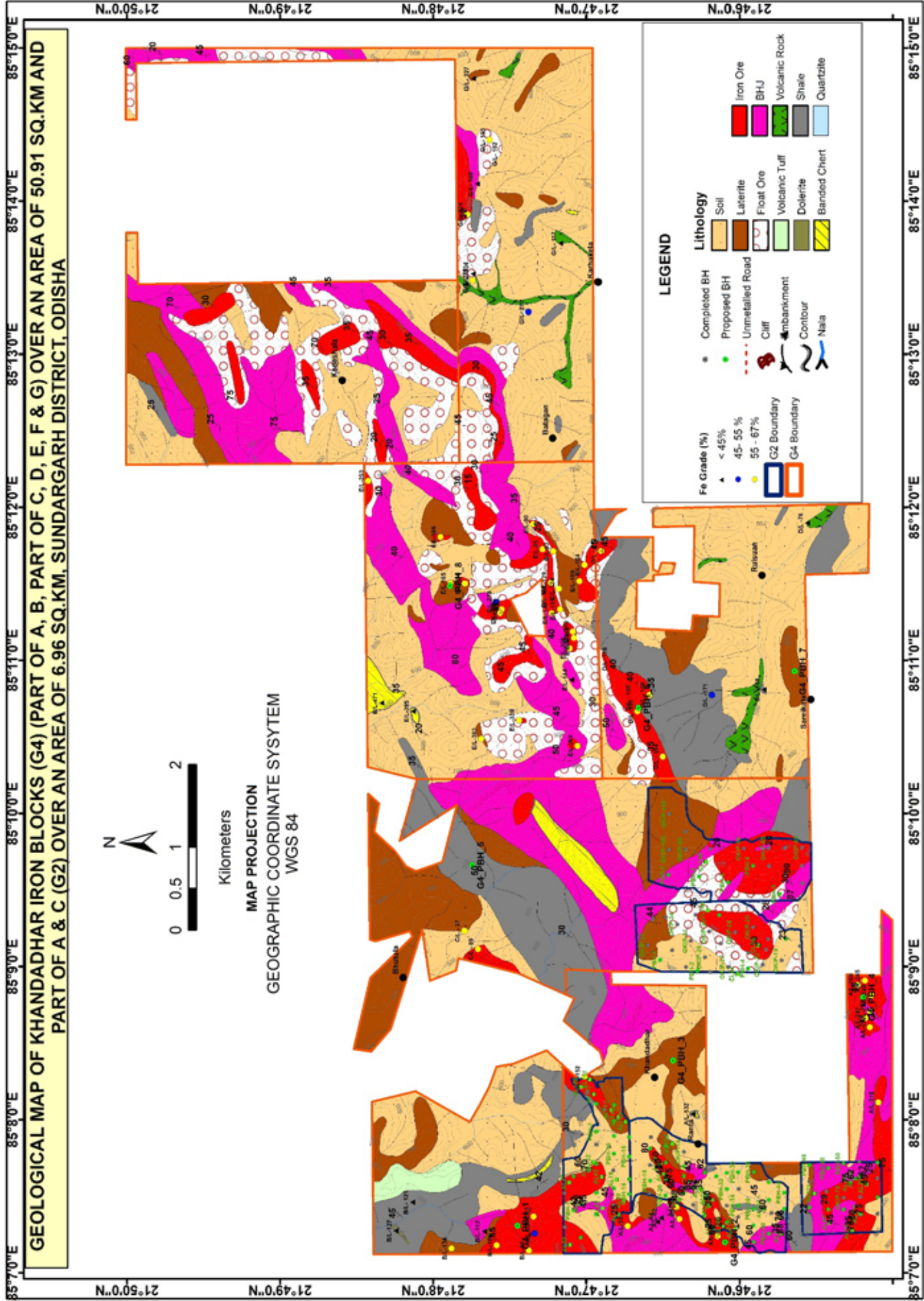
## NEW INTIATIVES FOR F.Y. 2021-22

COMPREHENSIVE DEVELOPMENT VILLAGE INTIATIVE: As per the Action Plan for 5Ts, OMC has to take up Comprehensive Development of peripheral villages of its two mines- Gandhamardan and Kodingamali Mines.





**ODISHA MINERAL EXPLORATION  
CORPORATION LTD.**



**GEOLOGICAL MAP OF KHANDADHAR IRON BLOCKS (G4) (PART OF A, B, PART OF C, D, E, F & G) OVER AN AREA OF 50.91 SQ.KM AND PART OF A & C (G2) OVER AN AREA OF 6.96 SQ.KM, SUNDARGARH DISTRICT, ODISHA**



Kilometers  
 MAP PROJECTION  
 GEOGRAPHIC COORDINATE SYSTEM  
 WGS 84

**LEGEND**

●	Completed BH	●	Soil
○	Proposed BH	■	Laterite
—	Unmetalled Road	■	Float Ore
—	Cliff	■	Volcanic Tuff
—	Embankment	■	Dolerite
—	Contour	■	Shale
—	Nala	■	Banded Chert
▲	Fe Grade (%) < 45%	■	Iron Ore
●	Fe Grade (%) 45 - 55 %	■	BHU
●	Fe Grade (%) 55 - 67 %	■	Volcanic Rock
■	G2 Boundary	■	Quartzite
■	G4 Boundary		



Odisha Mineral Exploration Corporation Ltd. (OMECL) has been allotted 18 (Eighteen) mineral blocks, 8 (Eight) for Iron, 8 (Eight) for Bauxite, 1(One) Fireclay and 1(One) Soapstone by Govt. of Odisha for exploration up to G2 (General Exploration) stage of UNFC for facilitating auction of mineral blocks.

The Bauxite blocks are located in Kalahandi, Rayagada & Koraput districts covering an area of 35 sq km. The Iron blocks cover an area of 59.089 Sq km and are located in Sundargarh and Keonjhar districts. The Fireclay and Soapstone blocks cover an area of 7.65 Sq Km and 6.20 Sq Km in Cuttack & Mayurbhanj districts respectively.

## IRON EXPLORATION

- Geological mapping of Khandadhar Iron Ore blocks comprising of Sub-block A to G with an area of 50.91 sq.km (G4) and parts of Sub-block A & C with an area of 6.96 sq.km (G2) has been completed and high exploration potential areas are identified for Core drilling.
- Chemical analysis of surface samples is completed and the Interim Mapping report of Khandadhar (G4) area has been submitted to NMET.
- A proposal to drill 8 nos. of boreholes in G4 areas (as per NMET approval) has been submitted to DFO, Bonai for the use of forest land and the proposal is in the process of approval.
- Forest Clearance (FC) proposal for drilling in Khandadhar-G2 areas will be submitted after obtaining authenticated land schedule from Tahsildar, Lahunipada.
- Mapping of Thakurani iron block of 1.21 sq.km is completed. Forest Clearance is yet to be submitted as the boundary of the Block is falling out of Odisha state into Jharkhand State.

## BAUXITE EXPLORATION

- Geological Mapping of 28.95sq km area for Keluamali, Nunapainmali, Karnapodikonda and Tarhapani Bauxite blocks is completed.
- For carrying Core drilling & other exploration work, Stage-II Forest Clearance (FC) has been obtained for 2 bauxite blocks – Keluamali and Nunapainmali blocks while FC for the rest bauxite blocks - Tarhapani, Karnapodikonda, and Majhingamali are under process.
- Chemical analysis of 23 selected surface samples collected from above 4 Bauxite blocks is completed.
- Core drilling work has been started in Nunapaimali Bauxite Block in Rayagada district.

## FIRECLAY & SOAPSTONE EXPLORATION

Geological mapping of 1(one) Fireclay block (7.65 sq.km) in Cuttack district and 1(one) Soapstone block (6.20 sq.km) in Mayurbhanj district has been completed.

## MINING

State Government with the approval of Central Government has reserved Rengalbeda NE Iron block over an area of 24.203 Ha in the district of Keonjhar for Iron Ore in favour of OMECL on dt.28.01.2021 u/s 17A(2) of MMDR Act, 1957.



Core drilling work at Nunapaimali Bauxite Block, Rayagada District, Odisha



Core samples of Nunapaimali Bauxite Block, Rayagada District, Odisha



Banded Hematite Jasper, Khandadhar Block, Sundargarh



Soft Laminated Ore, Khandadhar Block, Sundargarh



Photograph during field work at Khandadhar Iron ore Block, Sundargarh



Outcrop of Khondalite, Keluamali Block, Kalahandi



Fireclay band in between sandstone beds. (Hammer positioned on Fireclay band), Talabasta, Cuttack



Bands of Steatite (Soap Stone), Kaptipada, Mayurbhanj





**BUDGET PROVISION  
AND EXPENDITURE FOR THE  
FINANCIAL YEAR 2020-21**





## PROGRAMME EXPENDITURE

(Rs. In Lakhs)

NAME OF THE SCHEME	BUDGET PROVISION	EXPENDITURE (UPTO 31.01.2021)
2832-Integrated Mines, Mineral & Management System (i3MS)	4300.00	1218.71
1197-Research	30.45	10.00
2604-Capacity Building	50.00	0.00
3115-Mineral Exploration & Auction	7276.61	889.57
1277-Share Capital Investment in OMECL	42.51	42.51
0182-Construction of Building	250.00	22.10
<b>Total</b>	<b>11949.57</b>	<b>2182.89</b>

## ADMINISTRATIVE EXPENDITURE

(Rs. In Lakhs)

NAME OF THE SCHEME	BUDGET PROVISION	EXPENDITURE (UPTO 31.01.2021)
2852-Industries	39.65	16.00
0297-Director of Mines	1836.57	1400.30
0482-Field Administration	811.31	627.98
1910-Central Enforcement Flying Squad	417.60	334.80
1197-Research	175.84	125.37
0904-Mineral Survey & Exploration	686.51	433.21
0460-Expansion of Drilling Section	309.12	177.31
0750-Intensive Mineral Exploration and Assessment of Mineral Resources	1190.66	803.87
3451-Secretariat Economic Services-Steel & Mines Department.	804.92	596.53
Total	6272.18	4515.37

**ODISHA COVID HOSPITAL**



